



GETELEC

We protect your electronics

## **GETELEC LAB**

ANALYTICAL RESEARCH LABORATORY SPECIALIZING IN  
CHARACTERIZATION OF COMPOSITE MATERIALS

[www.laboratoire.getelec.com](http://www.laboratoire.getelec.com)



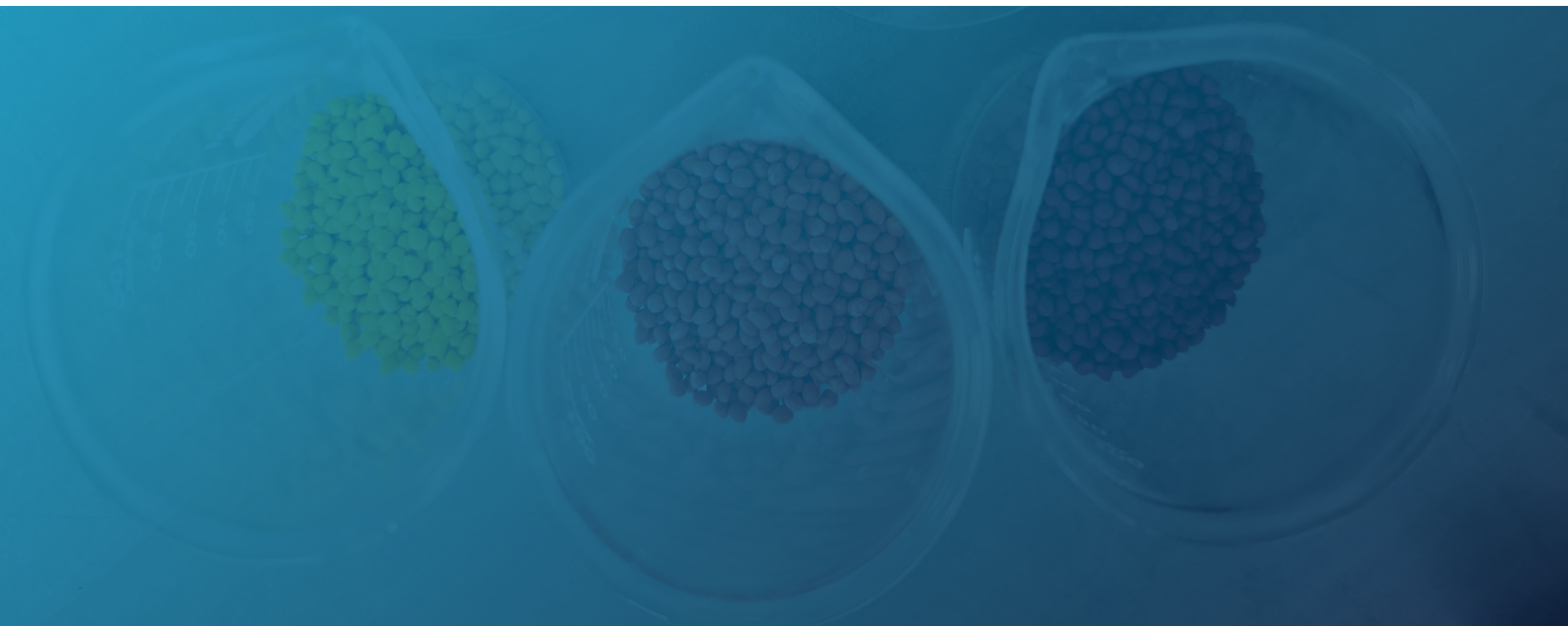
## ABOUT US

Getelec, an independant French company with unique expertise, has become a world-class specialist in elastomer formulations and a trusted partner of high-profile customers in many industrial sectors.

For over 50 years, Getelec has designed and manufactured customized solutions for technical sealing, electromagnetic protection, microwave absorption and heat dissipation. Getelec products are ideal for protecting high-tech equipment placed under conditions of severe environmental stress.

For 50 years, Getelec has operated in high-tech, multisectoral markets, meeting the most complex of specifications. Your satisfaction and innovation are key to our general policy, as reflected in our strict quality policy and a commitment to meeting your requirements, offering you the best services and solutions available on the market to ensure that your projects become technological success stories.

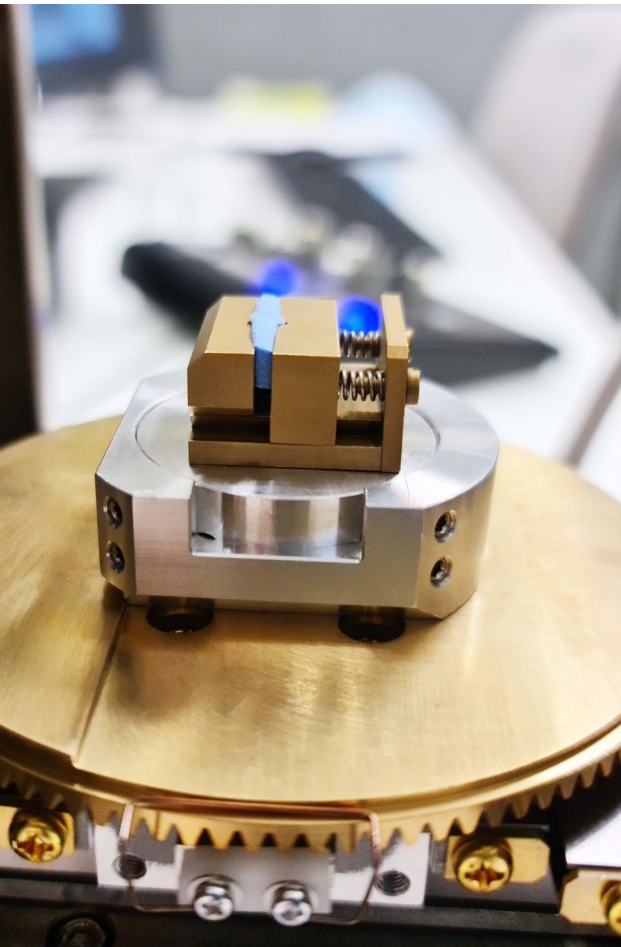
We provide you with all the benefit of our research and development center, along with our expertise and know-how to offer you turn-key solutions for your innovations.





## OUR COMPREHENSIVE CHARACTERIZATION AND DEFORMULATION SERVICE

We offer a **comprehensive characterization and deformulation service** to support you in your innovation projects and in the development of polymer, thermoplastic and thermosetting products.



### CHARACTERIZATION AND DEFORMATION OF COMPOSITE MATERIALS

Analyze the different properties of a material or a composite product. This service is provided by a dedicated chemical engineer.

### COMPARATIVE CHEMICAL ANALYSIS

Analyze and compare the chemical properties of two materials or two composite products. This service is provided by a dedicated chemical engineer.

### EXPERT REPORT

Our chemical engineer will provide you with a detailed expert report within 4 to 5 weeks after submission and validation of your project.



## »» OUR LABORATORY

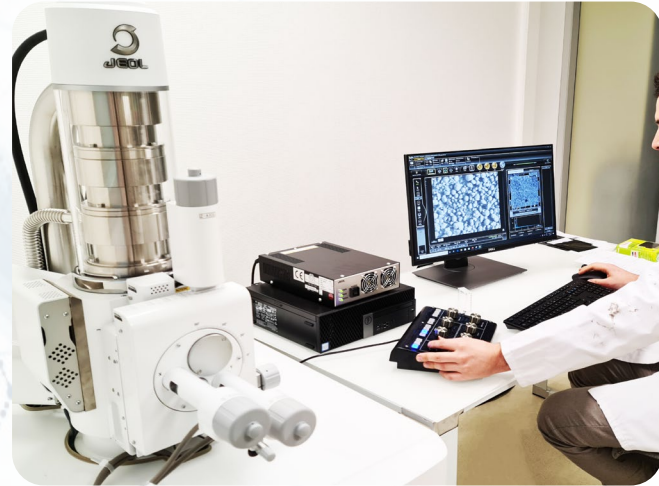
Getelec offers you a pool of latest-generation equipment, combined with excellent availability and the personalized support of our team.

From characterization, material deformation, and comparative chemical analysis through to research and development; our facility is able to fulfill all of your requests

## »» FOCUS ON OUR MOST REQUESTED EQUIPMENTS

### SEM-EDS

The scanning electron microscope allows to inspect the structure of materials and combines observation, image capture and measurement functions while providing a screen interface that facilitates visualization. Combined with this imaging tools, EDS makes it possible to determine the chemical composition of the material observed or to bring out by mapping the chemical distribution of the elements coming from the digitized area in the form of an image.



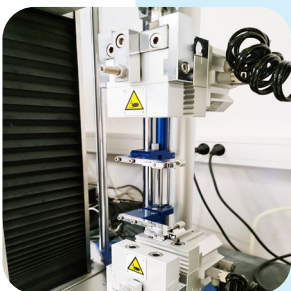
### Rheometer

Determines the optimal baking conditions, it makes it possible to measure the progress of the crosslinking process over a wide temperature range (80 to 200°C)



### Durometer

This device makes it possible to control the hardness (Shore 00 and A) of our materials.



### Dynamometer

Allows the execution of tests and compression with a force of up to 20 kN at room temperature. It allows the characterization of mechanical properties



### Particle size analyzer

Measures the particle size distribution and the form factor of the particles used in our formulations according to their size.



GETELEC

We protect your electronics

## GETELEC LAB

ANALYTICAL RESEARCH LABORATORY SPECIALIZING IN  
CHARACTERIZATION OF COMPOSITE MATERIALS

[www.laboratoire.getelec.com](http://www.laboratoire.getelec.com)