

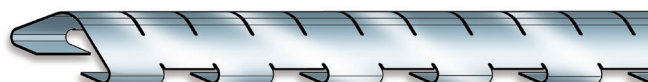
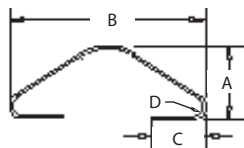


GETELEC

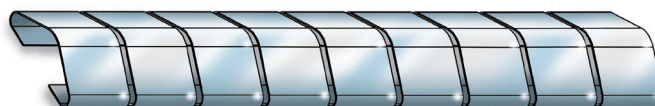
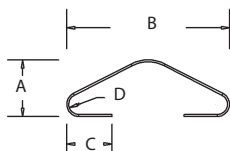
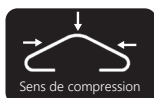
We protect your electronics

CONTACTS BRONZE BÉRYLLIUM

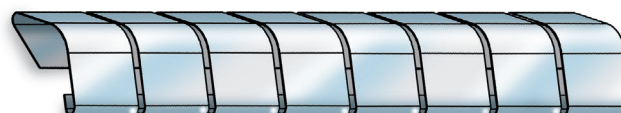
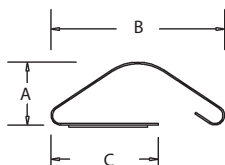
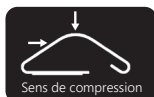
Référence	A (mm)	B (mm)	Doigt (mm)	Pas (mm)	Epaisseur (mm)	C (mm)	D (mm)	Longueur (mm)	Nombre de Doigts
11-32AF-XX-16	2.80	8.10	4.30	4.75	0.10	2.159	0.508	406	85
11-S-32AF-XX-16	2.80	8.10	4.30	4.75	0.05	2.159	0.508	406	85
22-60AF-XX-16	5.59	15.24	6.35	7.16	0.127	3.556	0.889	406	57
22-S-60AF-XX-16	5.59	15.24	6.35	7.16	0.08	3.556	0.889	406	57



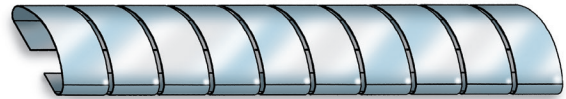
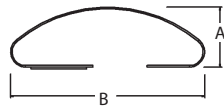
Référence	A (mm)	B (mm)	Doigt (mm)	Pas (mm)	Epaisseur (mm)	C (mm)	D (mm)	Longueur (mm)	Nombre de Doigts
11-28RH-XX-16	2.80	7.11	4.30	4.75	0.076	1.90	0.76	406	86
11-S-28RH-XX-16	2.80	7.11	4.30	4.75	0.05	1.90	0.76	406	86
11-32RH-XX-16	2.80	8.10	4.30	4.75	0.102	2.29	0.51	406	86
11-S-32RH-XX-16	2.80	8.10	4.30	4.75	0.05	2.29	0.51	406	86
13-30RH-XX-16	3.30	7.62	4.30	4.75	0.102	2.29	0.76	406	86
13-37RH-XX-16	3.30	9.40	5.715	6.35	0.08	2.29	0.51	406	86
13-S-37RH-XX-16	3.30	9.40	5.715	6.35	0.05	2.29	0.51	406	86
22-60RH-XX-16	5.60	15.20	6.40	7.10	0.130	3.56	1.02	406	57
22-S-60RH-XX-16	5.60	15.20	6.40	7.10	0.08	3.56	1.02	406	57



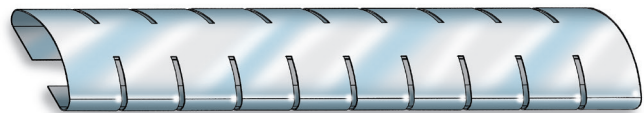
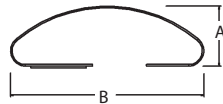
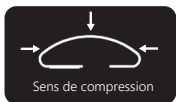
Référence	A (mm)	B (mm)	Doigt (mm)	Pas (mm)	Epaisseur (mm)	C (mm)	Longueur (mm)	Nombre de Doigts
11-32AH-XX-16	2.80	8.10	4.30	4.80	0.08	5.10	406	86
11-S-32AH-XX-16	2.80	8.10	4.30	4.80	0.05	5.10	406	86
13-37AH-XX-16	3.30	9.40	5.70	6.40	0.08	5.30	406	64
13-S-37RH-XX-16	3.30	9.40	5.70	6.40	0.05	5.30	406	64
14-38AH-XX-16	3.56	9.65	8.71	9.53	0.102	5.08	406	43
22-60AH-XX-16	5.60	15.24	8.74	9.50	0.13	7.10	406	43
22-S-60AH-XX-16	5.60	15.24	8.74	9.50	0.08	7.10	406	43
32-78AH-XX-16	8.10	19.80	8.74	9.50	0.102	11.40	406	43
32-S-78AH-XX-16	8.10	19.80	8.74	9.50	0.08	11.40	406	43



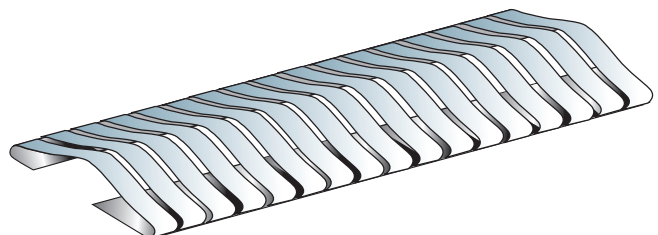
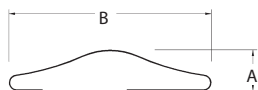
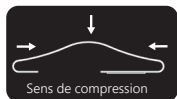
Référence	A (mm)	B (mm)	Doigt (mm)	Pas (mm)	Epaisseur (mm)	Longueur (mm)	Nombre de Doigts
8-45DT-XX-15	2.03	11.4	2.54	3.18	0.076	381	150
8-S-45DT-XX-15	2.03	11.4	2.54	3.18	0.05	381	150
11-35DT-XX-15	2.79	8.89	4.32	4.78	0.076	381	80
11-S-35DT-XX-15	2.79	8.89	4.32	4.78	0.05	381	80
14-45DT-XX-15	3.56	11.4	5.79	6.35	0.076	381	60
14-S-45DT-XX-15	3.56	11.4	5.79	6.35	0.05	381	60
22-62DT-XX-15	5.59	15.7	8.76	9.53	0.102	381	40
22-S-62DT-XX-15	5.59	15.7	8.76	9.53	0.076	381	40



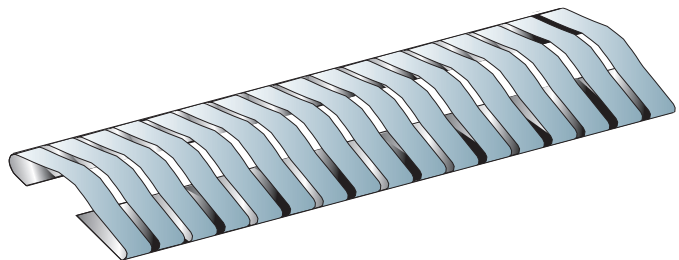
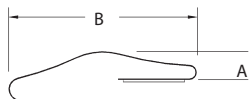
Référence	A (mm)	B (mm)	Doigt (mm)	Pas (mm)	Epaisseur (mm)	Longueur (mm)	Nombre de Doigts
11-35DTS-XX-15	2.79	8.89	4.32	4.78	0.076	381	80
11-S-35DTS-XX-15	2.79	8.89	4.32	4.78	0.05	381	80
14-45DTS-XX-15	3.56	11.4	6.35	6.35	0.076	381	60
14-S-45DTS-XX-15	3.56	11.4	6.35	6.35	0.05	381	60
22-62DTS-XX-15	5.59	15.7	9.53	9.53	0.102	381	40
22-S-62DTS-XX-15	5.59	15.7	9.53	9.53	0.076	381	40



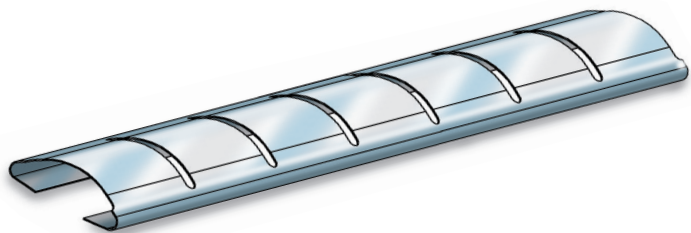
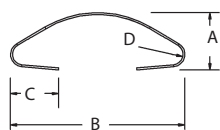
Référence	A (mm)	B (mm)	Doigt (mm)	Pas (mm)	Epaisseur (mm)	Longueur (mm)	Nombre de Doigts
8-45LPAH-XX-16	2.00	11.40	2.50	3.18	0.10	406	128
8-S-45LPAH-XX-16	2.00	11.40	2.50	3.18	0.08	406	128
12-60LPAH-XX-16	3.00	15.20	2.50	3.18	0.10	406	128
12-S-60LPAH-XX-16	3.00	15.20	2.50	3.18	0.08	406	128



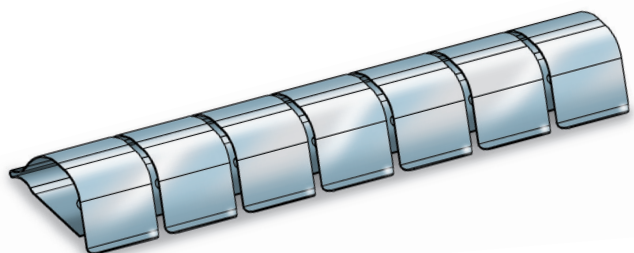
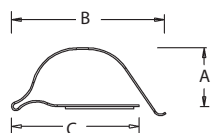
Référence	A (mm)	B (mm)	Doigt (mm)	Pas (mm)	Epaisseur (mm)	Longueur (mm)	Nombre de Doigts
8-45LPC-060-XX-16	2.00	11.40	2.50	3.18	0.10	406	128
8-S-45LPC-060-XX-16	2.00	11.40	2.50	3.18	0.08	406	128
12-60LPC-060-XX-16	3.00	15.20	2.50	3.18	0.10	406	128
12-S-60LPC-060-XX-16	3.00	15.20	2.50	3.18	0.08	406	128



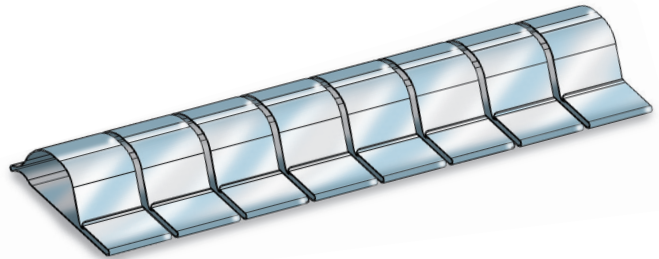
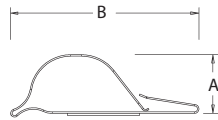
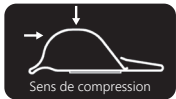
Référence	A (mm)	B (mm)	C (mm)	D (mm)	Doigt (mm)	Pas (mm)	Epaisseur (mm)	Longueur (mm)	Nombre de Doigts
7-19PCI-XX-9.0	1.70	4.50	1.27	0.27	4.60	5.10	0.05	229	45
8-19PCI-XX-9.0	1.70	4.80	1.14	0.38	4.60	5.10	0.05	229	45



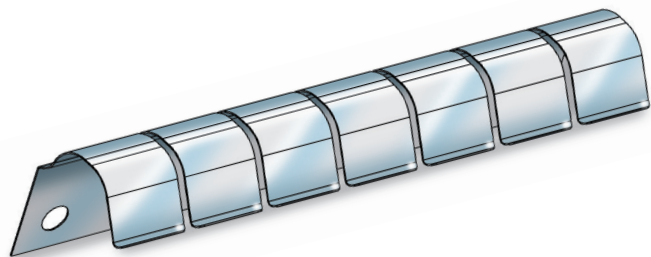
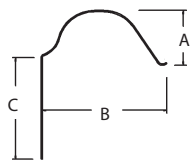
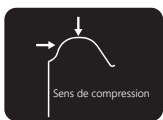
Référence	A (mm)	B (mm)	C (mm)	Doigt (mm)	Pas (mm)	Epaisseur (mm)	Longueur (mm)	Nombre de Doigts
11-28FS-XX-16	2.79	7.11	5.84	4.32	4.78	0.07	406	85
11-S-28FS-XX-16	2.79	7.11	5.84	4.32	4.78	0.05	406	85
14-37FS-XX-16	3.56	9.14	7.87	5.79	6.35	0.07	406	64
14-S-37FS-XX-16	3.56	9.14	7.87	5.79	6.35	0.05	406	64
23-60FS-XX-24	5.84	15.24	12.70	8.71	9.53	0.10	610	64
23-S-60FS-XX-24	5.84	15.24	12.70	8.71	9.53	0.07	610	64
25-78FS-XX-24	6.35	19.81	13.46	8.51	9.53	0.12	610	64
25-S-78FS-XX-24	6.35	19.81	13.46	8.51	9.53	0.07	610	64
41-113FS-XX-12	10.41	28.78	20.32	11.68	12.57	0.17	305	24



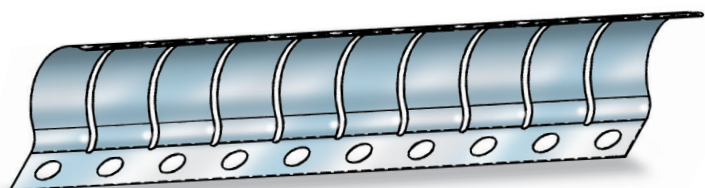
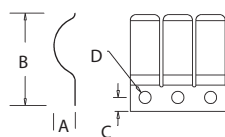
Référence	A (mm)	B (mm)	Doigt (mm)	Pas (mm)	Epaisseur (mm)	Longueur (mm)	Nombre de Doigts
11-37FSC-XX-16	2.79	9.50	4.30	4.80	0.07	406	85
11-S-37FSC-XX-16	2.79	9.50	4.30	4.80	0.05	406	85
14-51FSC-XX-16	3.56	13.00	5.80	6.40	0.07	406	64
14-S-51FSC-XX-16	3.56	13.00	5.80	6.40	0.05	406	64
23-76FSC-XX-24	5.84	19.30	8.70	9.50	0.10	610	64
23-S-76FSC-XX-24	5.84	19.30	8.70	9.50	0.07	610	64



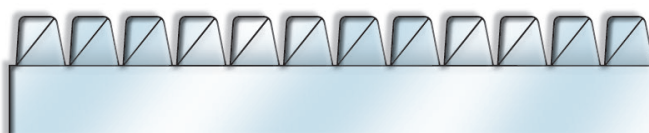
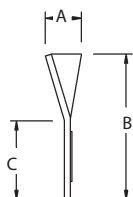
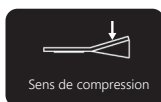
Référence	A (mm)	B (mm)	C (mm)	Doigt (mm)	Pas (mm)	Epaisseur (mm)	Longueur (mm)	Nombre de Doigts
11-28FSV23-XX-16	2.80	7.10	6.10	4.30	4.80	0.07	406	85
11-S-28FSV23-XX-16	2.80	7.10	6.10	4.30	4.80	0.05	406	85
14-37FSV30-XX-16	3.60	9.40	8.10	5.80	6.40	0.07	406	64
14-S-37FSV30-XX-16	3.60	9.40	8.10	5.80	6.40	0.05	406	64
23-60FSV50-XX-24	5.80	15.20	12.70	8.70	9.50	0.09	610	64
23-S-60FSV50-XX-24	5.80	15.20	12.70	8.70	9.50	0.05	610	64
25-78FSV50-XX-24	6.40	19.80	12.70	8.50	9.50	0.12	610	64
25-S-78FSV50-XX-24	6.40	19.80	12.70	8.50	9.50	0.07	610	64
41-113FSV-XX-12	10.41	28.70	20.32	11.68	12.70	0.17	305	24



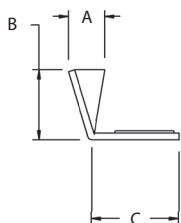
Référence	A (mm)	B (mm)	C (mm)	D (mm)	Doigt (mm)	Pas (mm)	Epaisseur (mm)	Longueur (mm)	Nombre de Doigts
25-109FSDS-XX-24	6.40	27.70	4.06	3.56	8.50	9.50	0.12	610	64
25-S-109FSDS-XX-24	6.40	27.70	4.06	3.56	8.50	9.50	0.07	610	64
41-163FSDS-XX-24	10.40	41.40	4.83	3.56	11.70	12.70	0.17	610	64



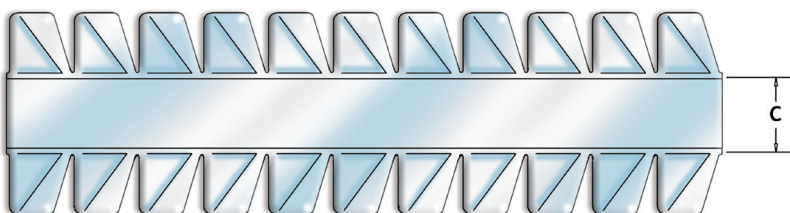
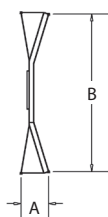
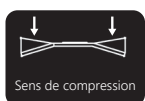
Référence	A (mm)	B (mm)	C (mm)	Doigt (mm)	Pas (mm)	Epaisseur (mm)	Longueur (mm)	Nombre de Doigts
3-20T-XX-24	0.76	5.08	3.56	2.03	2.41	0.07	610	253
3-23T-XX-24	0.76	5.84	3.56	2.03	2.41	0.07	610	253
3-S-23T-XX-24	0.76	5.84	3.56	2.03	2.41	0.05	610	253
6-30T-XX-24	1.78	7.62	3.81	3.81	4.19	0.076	610	146
6-S-30T-XX-24	1.78	7.62	3.81	3.81	4.19	0.05	610	146
6-34T-XX-24	1.78	8.64	4.57	3.81	4.19	0.07	610	146
6-S-34T-XX-24	1.78	8.64	4.57	3.81	4.19	0.05	610	146



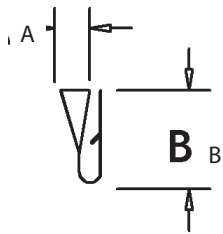
Référence	A (mm)	B (mm)	C (mm)	Doigt (mm)	Pas (mm)	Epaisseur (mm)	Longueur (mm)	Nombre de Doigts
3-23TV-XX-24	0.76	2.03	4.06	2.03	2.41	0.07	610	253
3-23TV30-XX-24	0.76	2.03	7.62	2.03	2.41	0.07	610	253
3-S-23TV-XX-24	0.76	2.03	4.06	2.03	2.41	0.05	610	253
6-34TV-XX-24	1.78	3.56	5.08	3.81	4.19	0.07	610	146
6-S-34TV-XX-24	1.78	3.56	5.08	3.81	4.19	0.05	610	146



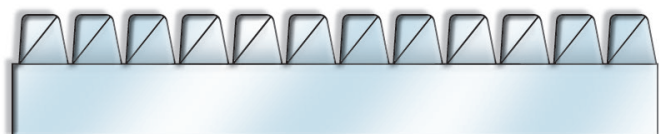
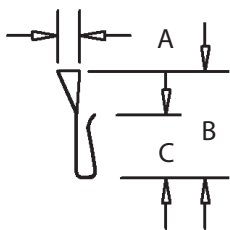
Référence	A (mm)	B (mm)	C (mm)	Doigt (mm)	Pas (mm)	Epaisseur (mm)	Longueur (mm)	Nombre de Doigts
6-50T2-XX-24	1.78	12.70	4.57	3.81	4.19	0.07	610	146
6-S-50T2-XX-24	1.78	12.70	4.57	3.81	4.19	0.05	610	146



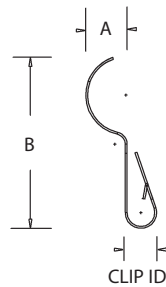
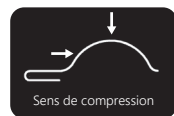
Référence	A (mm)	B (mm)	Doigt (mm)	Pas (mm)	Epaisseur (mm)	Longueur (mm)	Nombre de Doigts	Clip ID	Lance	Lance Pitch
3-23UT-040-XX-16	0.76	3.81	2.03	2.41	0.07	406	168	1.02	n/a	n/a
3-23UT-070-XX-16	0.76	3.81	2.03	2.41	0.07	406	168	1.78	n/a	n/a
3-23UT-070-DL-XX-16	0.76	3.81	2.03	2.41	0.07	406	168	1.78	D	1"
6-34UT-040-XX-16	1.78	5.59	3.81	4.19	0.07	406	97	1.02	n/a	n/a
6-34UT-070-XX-16	1.78	5.59	3.81	4.19	0.07	406	97	1.78	n/a	n/a
6-34UT-070-DL-XX-16	1.78	5.59	3.81	4.19	0.07	406	97	1.78	D	1"



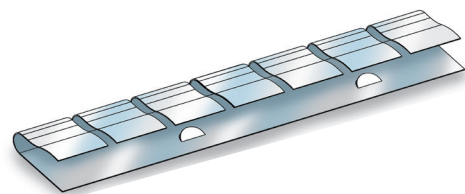
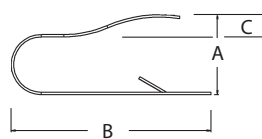
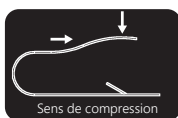
Référence	A (mm)	B (mm)	C (mm)	Doigt (mm)	Pas (mm)	Epaisseur (mm)	Longueur (mm)	Nombre de Doigts	Clip ID	Lance	Lance Pitch
6-34UT3-050-XX-16	1.78	9.65	5.59	3.81	4.19	0.07	406	97	1.27	n/a	n/a
6-34UT3-050-DL-XX-16	1.78	9.65	5.59	3.81	4.19	0.07	406	97	1.27	D	1"
6-34UT3-070-XX-16	1.78	9.65	5.59	3.81	4.19	0.07	406	97	1.78	n/a	n/a
6-34UT3-070-DL-XX-16	1.78	9.65	5.59	3.81	4.19	0.07	406	97	1.78	D	1"



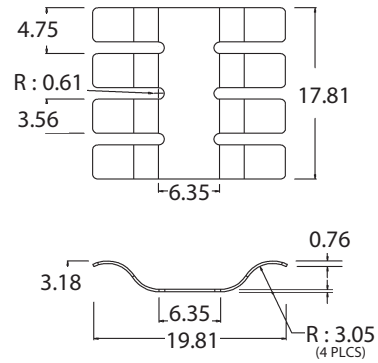
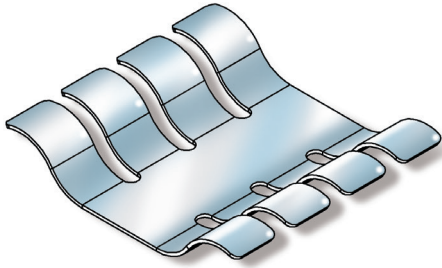
Référence	A (mm)	B (mm)	Doigt (mm)	Pas (mm)	Epaisseur (mm)	Lance start	Lance Pitch	Longueur (mm)	Nombre de Doigts	Clip ID	Lance
10-30C-045-XX-16	2.50	7.60	3.60	4.75	0.12			406	86	1.14	n/a
10-30C-050-XX-16	2.50	7.60	3.60	4.75	0.12			406	86	1.27	n/a
10-30C-065-XX-16	2.50	7.60	3.60	4.75	0.12			406	86	1.65	n/a
10-30C-070-XX-16	2.50	7.60	3.60	4.75	0.12			406	86	1.78	n/a
10-30C-045-DL-XX-16	2.50	7.60	3.60	4.75	0.12	12.20	25.40	406	86	1.14	D
10-30C-050-DL-XX-16	2.50	7.60	3.60	4.75	0.12	12.20	25.40	406	86	1.27	D
10-30C-065-DL-XX-16	2.50	7.60	3.60	4.75	0.12	12.20	25.40	406	86	1.65	D
10-30C-070-DL-XX-16	2.50	7.60	3.60	4.75	0.12	12.20	25.40	406	86	1.78	D
11-45C-045-XX-16	2.80	11.40	3.60	4.75	0.12			406	86	1.14	n/a
11-45C-050-XX-16	2.80	11.40	3.60	4.75	0.12			406	86	1.27	n/a
11-45C-065-XX-16	2.80	11.40	3.60	4.75	0.12			406	86	1.65	n/a
11-45C-070-XX-16	2.80	11.40	3.60	4.75	0.12			406	86	1.78	n/a
11-45C-045-DL-XX-16	2.80	11.40	3.60	4.75	0.12	12.20	25.40	406	86	1.14	D
11-45C-050-DL-XX-16	2.80	11.40	3.60	4.75	0.12	12.20	25.40	406	86	1.27	D
11-45C-065-DL-XX-16	2.80	11.40	3.60	4.75	0.12	12.20	25.40	406	86	1.65	D
11-45C-070-DL-XX-16	2.80	11.40	3.60	4.75	0.12	12.20	25.40	406	86	1.78	D
25-109C-070-XX-16	6.40	27.70	8.50	9.53	0.12			406	43	1.78	n/a
25-109C-070-DL-XX-16	6.40	27.70	8.50	9.53	0.12	17.78	28.58	406	43	1.78	D
25-109C-120-XX-16	6.40	27.70	8.50	9.53	0.12			406	43	3.05	n/a
25-109C-130-XX-16	6.40	27.70	8.50	9.53	0.12			406	43	3.30	n/a



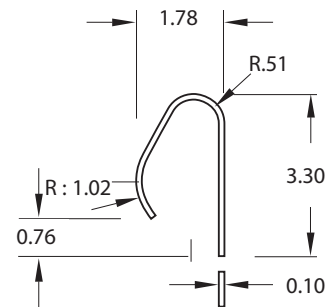
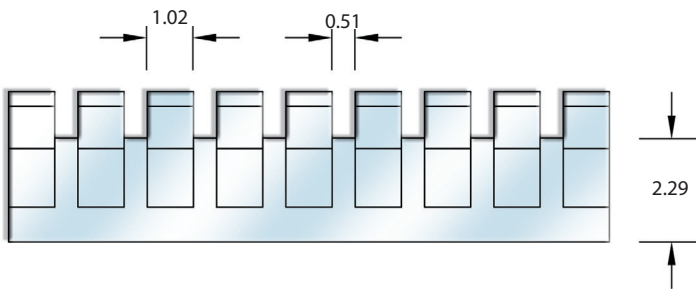
Référence	A (mm)	B (mm)	Doigt (mm)	Pas (mm)	Epaisseur (mm)	Lance start	Lance Pitch	Longueur (mm)	Nombre de Doigts	Clip ID	Lance
10-30C-045-DL-XX-16	2.50	7.60	3.60	4.75	0.12	12.20	25.40	406	86	1.14	D



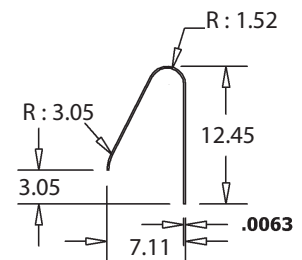
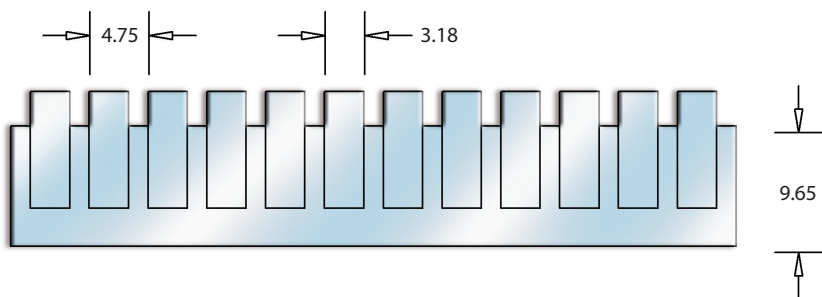
GTB 0850 | Contact



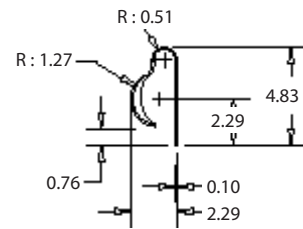
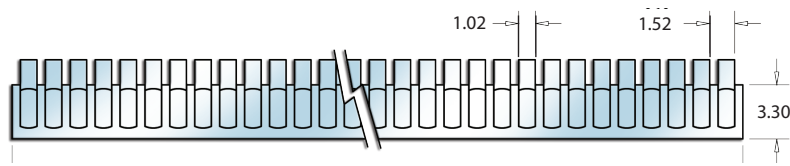
7-13U | Contact



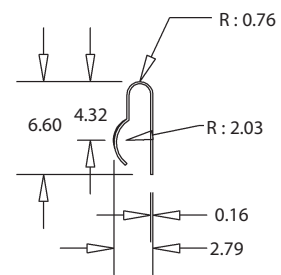
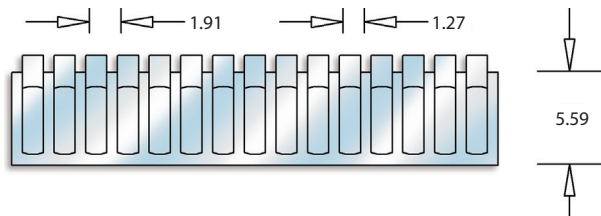
GTB 0950 | Contact



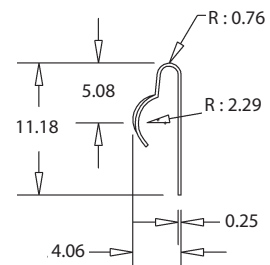
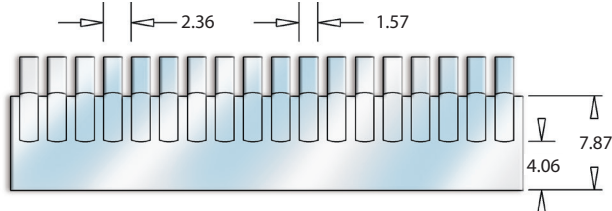
9-19UD | Contact



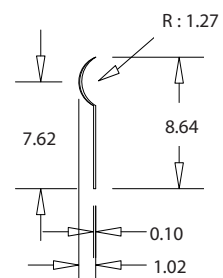
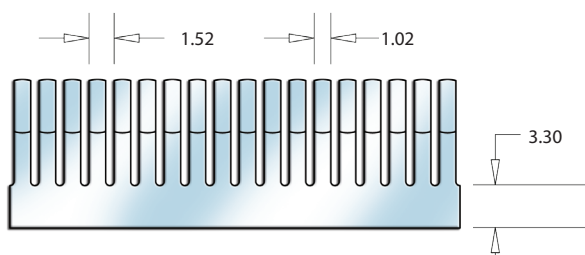
10-26UD | Contact



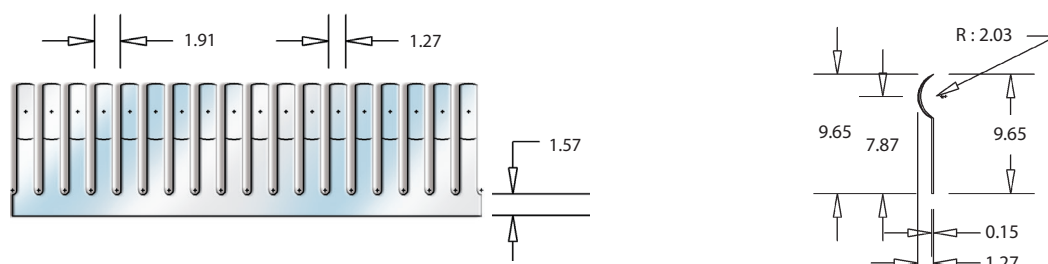
16-44UD | Contact



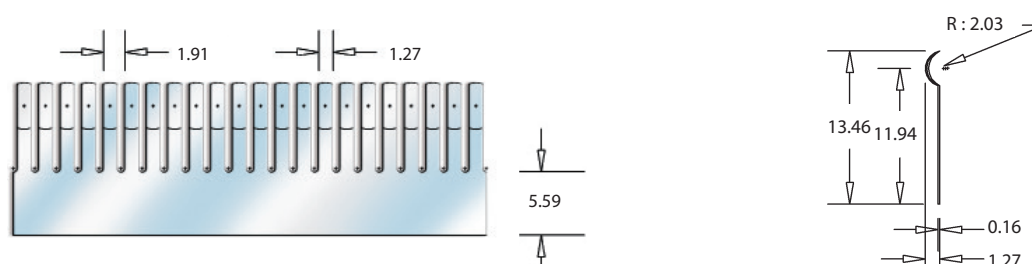
4-34D | Contact



4-38D | Contact

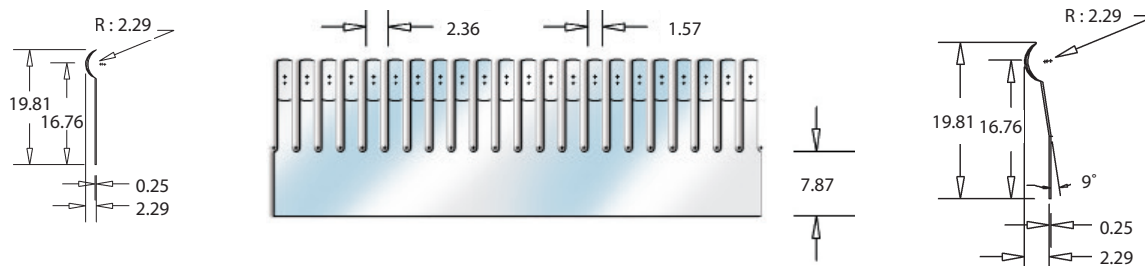


4-53D | Contact

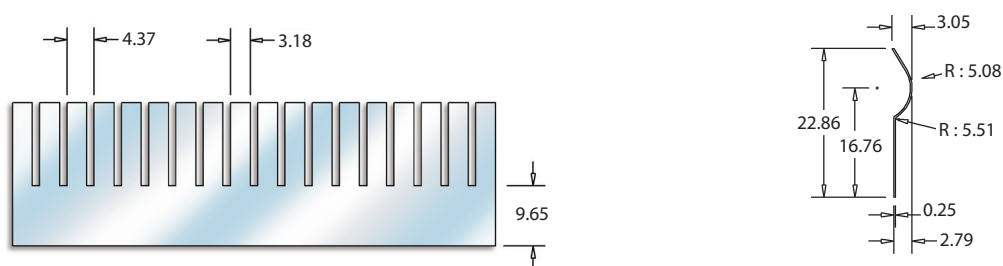


9-78D | Contact

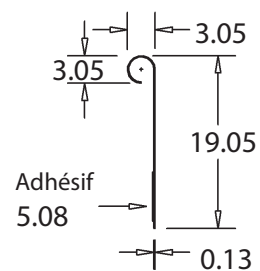
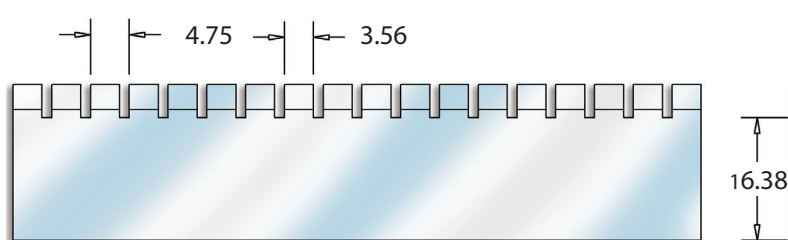
9-78D-A | Contact



11-90S | Contact

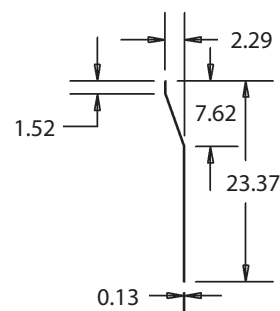
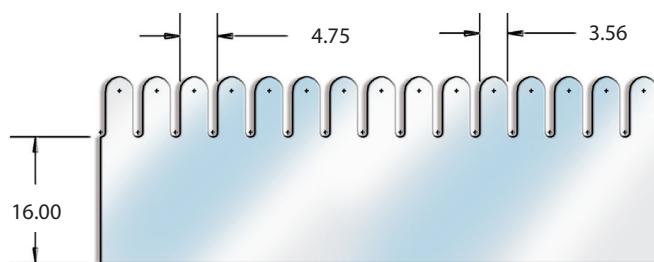
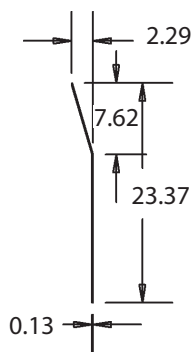


12-75RS | **Contact**



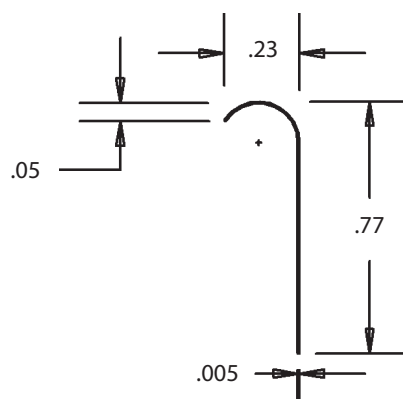
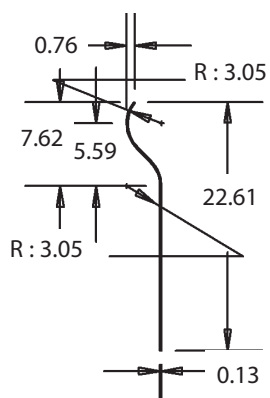
8-92RB | **Contact**

8-92RC | **Contact**



11-89RA | **Contact**

22-77RR | **Contact**



Information

Lors d'une demande de prix ou d'une commande, veuillez nous communiquer la référence, la finition souhaitée ainsi que la longueur.

Finitions	Code d'identification
Brillant	BD
Etain brillant	SN
Nickel brillant	NI
Zinc/Chromate	ZnC
Cadium Chromate	CdC
Etain satiné	ST
Argent	S
Or	G

Exemple de référence pour commander :

11-28FS-NI-16

- Le plaquage de finition standard est de 0.005mm \pm 0.003
- Le plaquage or est de 0.001mm

Performance de compression / déflexion

La force de compression est exprimée en kg/cm linéaire. La déflexion est de 25%.

Références	Déflexion	Force de compression (kg/cm linéaire)
3-23T	0.46mm	0.37
6-34T	1.24mm	0.49
6-50T2	1.24mm	0.64
9-19UD	1.83mm	0.45
11-32RH	0.89mm	0.51
11-45C	2.29mm	0.28
14-S-37FS	2.03mm	0.24

Références	Déflexion	Force de compression (kg/cm linéaire)
14-45DT	2.49mm	0.36
22-60AH	3.56mm	0.37
22-60RH	1.78mm	0.71
23-76FSC	3.30mm	0.51
25-109C	3.56mm	0.54
25-78FS	3.81mm	0.54
28-49U	5.08mm	0.16

Efficacité de blindage

Efficacité de blindage moyenne calculée à partir d'une déflexion de 25%. Conformément à la norme MIL-STD-285.

