

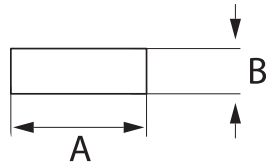
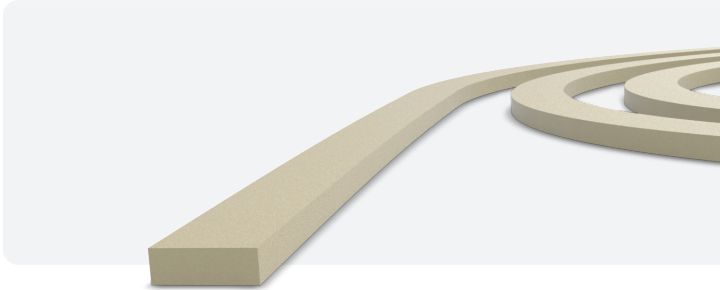


GETELEC

We protect your electronics

## AUTRES PROFILS CONDUCTEURS EXTRUDÉS

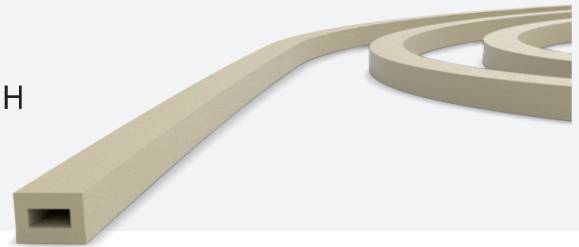
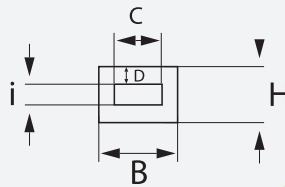
### PROFIL RECTANGULAIRE PLEIN



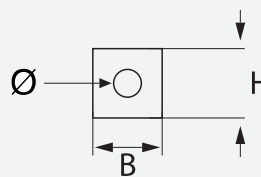
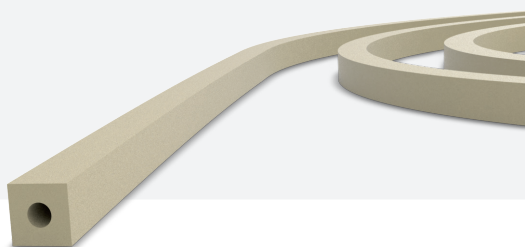
Ref.	A (mm)	B (mm)	Ref.	A (mm)	B (mm)
1025	1.00	2.50	2503	5.00	3.00
1610	1.60	1.07	6010	6.00	1.00
1805	1.80	0.50	6020	6.00	2.00
2010	2.00	1.00	6080	6.00	8.00
2415	2.41	1.57	6416	6.40	1.60
2501	2.50	1.00	6580	6.50	8.00
2515	2.50	1.50	7512	7.50	1.25
3032	3.00	3.20	8060	8.00	6.00
3040	3.00	4.00	1016	10.00	1.60
3115	3.00	1.50	1203	12.00	3.00
3010	3.00	1.00	1240	12.00	4.00
3019	3.05	1.91	1248	12.70	4.78
3216	3.20	1.60	1273	12.70	3.18
3232	3.20	1.00	1503	15.00	3.00
3248	3.20	4.80	2542	25.40	2.00
3610	3.60	1.10	3510	35.00	1.00
4016	4.00	1.60	3710	37.00	10.00

### PROFIL RECTANGULAIRE CREUX

Ref.	B (mm)	H (mm)	C (mm)	D (mm)	l (mm)
2738	3.80	2.70	2.30	0.80	1.00
1268	12.00	6.00	8.00	0.80	4.40



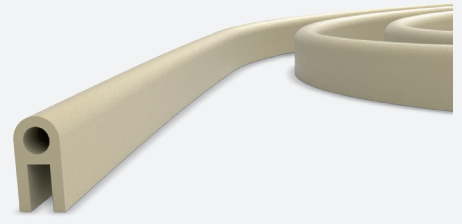
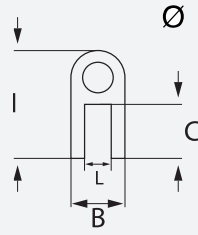
### PROFIL CARRÉ CREUX



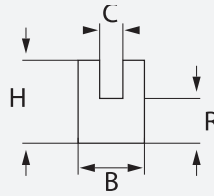
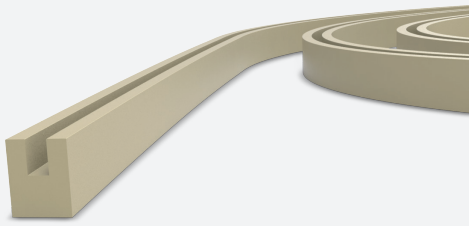
Ref.	B (mm)	H (mm)	Ø (mm)
2828	2.80	2.80	1.20
3031	3.00	3.00	1.00
30315	3.00	3.00	1.50
3535	3.50	3.50	1.40
6062	6.00	6.00	2.50

## PROFIL EN « A »

Ref.	B (mm)	H (mm)	L (mm)	C (mm)	Ø (mm)
1531	1.57	3.18	0.81	1.60	0.50
1836	1.80	3.60	0.40	1.80	0.50
2357	2.30	5.70	0.80	3.40	0.90
2055	2.00	5.50	0.80	3.50	1.00
3163	3.18	6.35	1.57	3.18	1.80



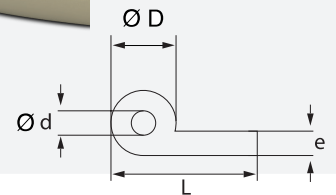
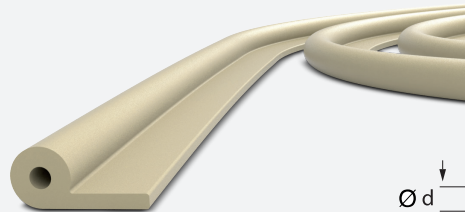
## PROFIL EN « U »



Ref.	B (mm)	H (mm)	C (mm)	R (mm)
2525	2.54	2.54	0.86	0.84
3228	3.20	2.80	0.66	1.27
3939	3.96	3.96	1.57	1.19
39039	3.96	3.96	1.57	2.80
4050	4.00	5.00	1.40	2.70
4056	4.50	5.50	2.10	3.00
4439	4.45	4.00	1.19	1.91
8080	8.00	8.00	5.00	1.50
9162	9.15	6.20	3.00	4.40

Ref.	Ø D (mm)	Ø d (mm)	L (mm)	e (mm)
5712	3.50	2.55	5.70	1.20
4084	4.00	2.00	8.40	2.00
4090	4.00	1.50	9.00	1.50
5011	5.00	1.80	11.00	1.70
8014	7.92	4.70	14.30	1.60
8114	7.92	3.42	14.30	1.60
3015	3.00	1.50	15.00	2.00
6401	6.40	3.20	16.00	1.60
1165	11.00	6.50	17.50	1.60
9019	9.00	6.48	19.00	1.60
7018	6.40	4.80	19.10	1.60
1021	10.00	6.00	21.00	2.00

## PROFIL EN « P »



## PROFIL QUADRILOBE



Ref.	A (mm)	B (mm)
2831	2.80	3.10

